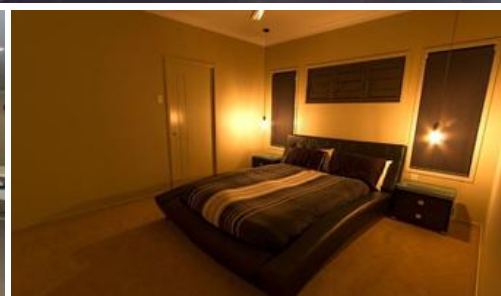


Leased



10 Winpara Dr, Kirkwood



## So Much Space, So Much Value!

This attractive home is complete with four bedrooms, two bathrooms, stylish & modern kitchen, open plan living and dining, rumpus room/media room, alfresco entertaining, double lock up garage, fenced flat back yard.

Light filled with abundant use of glass to invite in sunshine, there is a relaxed, welcoming ambience throughout, a true family home in essence and design. The home has a ducted air-conditioned and the master bedroom is over-sized with ensuite and walk-in robe, and is located in a separate side of the home, away from two bedrooms, enhancing privacy.

The open plan kitchen overlooks the family room and beyond to the covered alfresco entertaining area with a large polished concrete benchtop as feature. Dressed with, top of the range appliances including pyrolytic oven, second oven which is also a microwave and the large induction cook top, soft closing cupboards, walk-in pantry and generous bench space and storage, this kitchen is sure to be a please. The home is full of features include high ceilings, feature lighting and down lighting throughout, security screens, ceiling fans, ducted air-conditioning, luxury bathrooms with floor to ceiling tiles, quality fixtures and fittings throughout.

The above information provided has been furnished to us by the vendor/s. We have not verified whether or not that information is accurate and do not have any belief in one way or the other in its accuracy. We do not accept any responsibility to any person for its accuracy and do no more than pass it on. All interested parties should make and rely upon their own inquiries in order to determine whether or not this information is in fact accurate.

4 2 2

<b>Price</b>	\$360 per week
<b>Property Type</b>	rental
<b>Property ID</b>	767

### Agent Details

Gladstone Real Estate - 07 4976 9611

### Office Details

Gladstone  
1/25 Tank Street, Gladstone, QLD  
4680 Gladstone Central QLD 4680  
Australia  
07 4976 9611

GLADSTONE REAL ESTATE